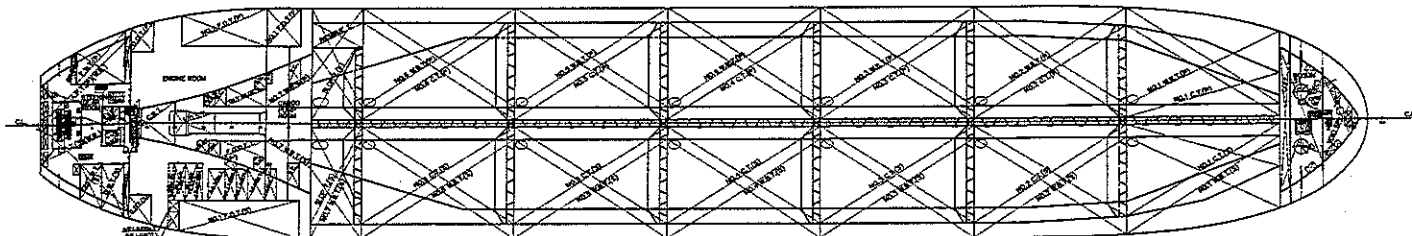
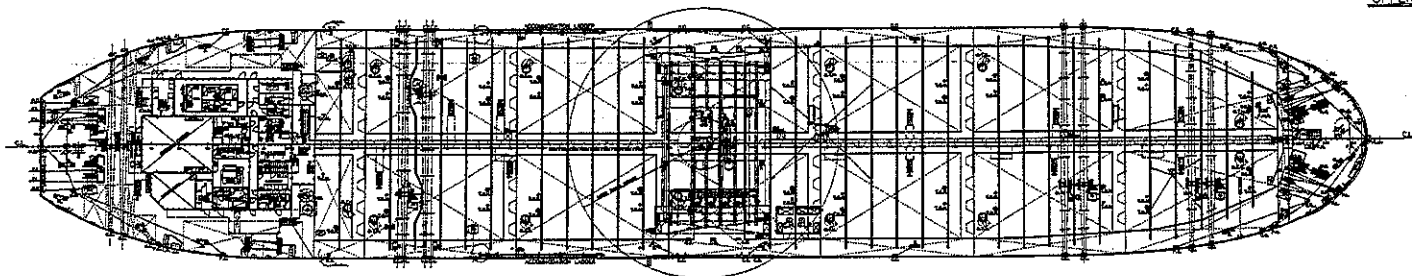
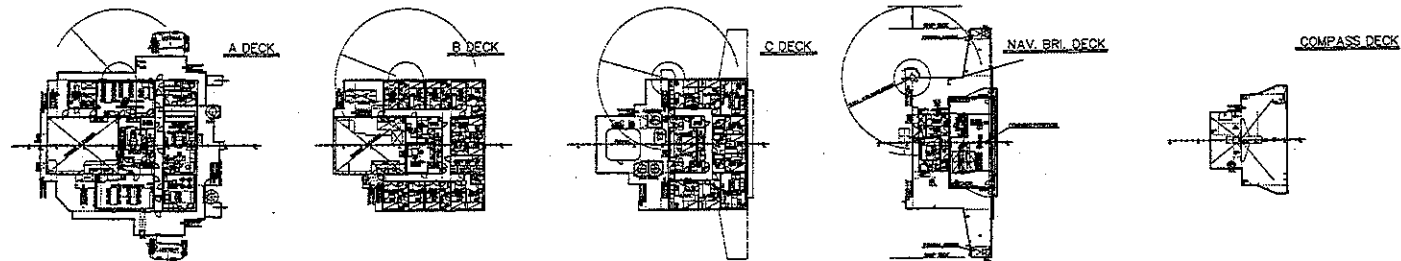
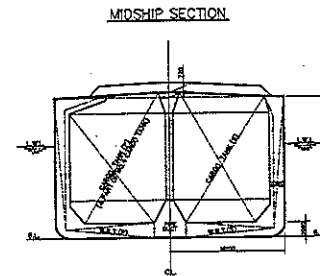
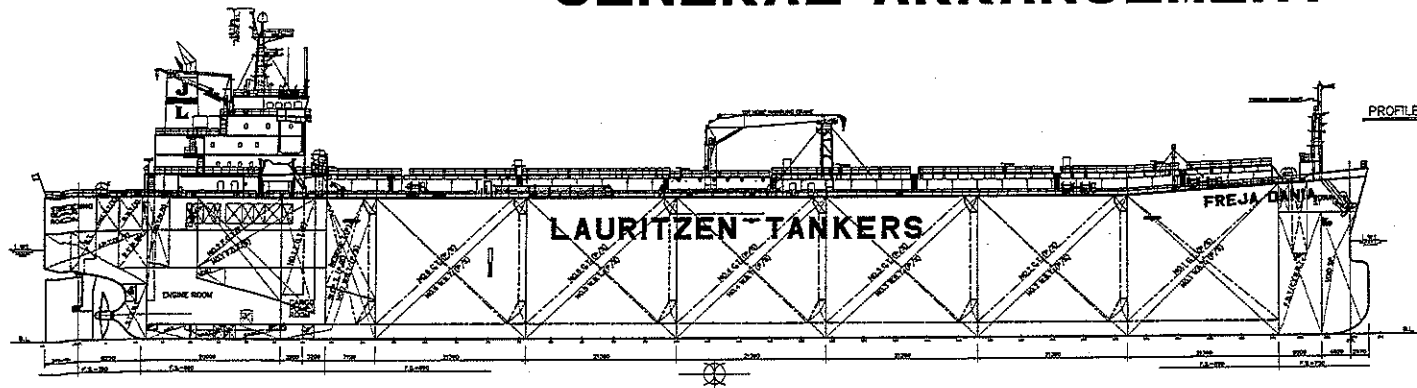


REMARKS

# GENERAL ARRANGEMENT



**PRINCIPAL PARTICULARS**

LENGTH (D.A.)	185.82 M
LENGTH (P.P.)	179.04 M
BREADTH (M.O.)	32.20 M
DEPTH (M.O.)	19.67 M
DRAFT (SUMMER EXT.)	13.922 M
DEADWEIGHT	53755 T
GROSS TONNAGE	11800
MAIN ENGINE	1 SET OF BUEG 60LS
M.C.P.	10620 KW (14440 PS) x 100 r/min
SERVICE SPEED	about 15.75 KNOTS
CLASSIFICATION	IKK NKK (Tanker, Oil-Floating) and below 50°C (CGP) IACS MC



**FREJA DANIA**  
SNO.5370

**GENERAL ARRANGEMENT**  
— FINISHED PLAN — LIST NO. C-3

NO. NO.	6320600	SHIN KURUSHIMA DOCKYARD CO., LTD.
NAME	Freja Dania	EBIME JAPAN
DESIGNER	J. Iwamoto	ENGINEERING DIVISION
APPROVER	J. Iwamoto	
DATE	2007/7/26	
NO.	1/228	NO. 002-002-00